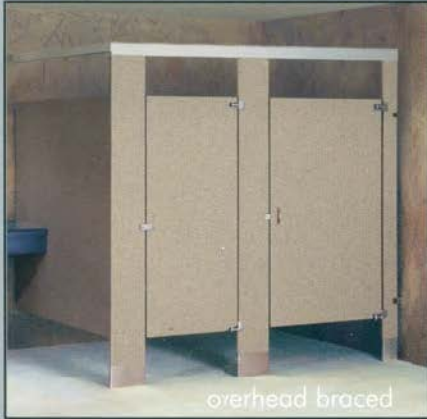


# Bathroom Partitions



HIGH PRESSURE LAMINATE

# color selector

## high pressure laminate





# Color Selector

## Solid Surface

### Standard Colors



\*

# Color Selector

## Solid Plastic Polyethylene (HDPE)



Cashmere 947-113



Khaki 947-122



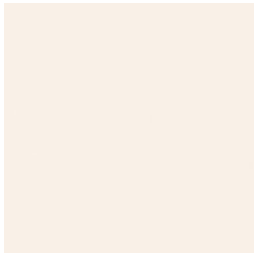
Marine Blue 947-125



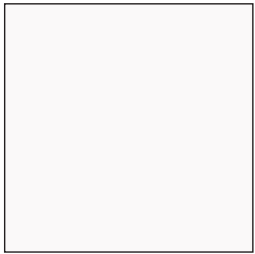
Hunter Green 947-119



Burgundy Wine 947-110



Champagne 947-114



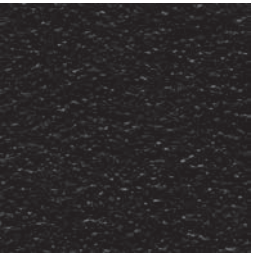
White 947-108



Ash Grey 947-101



Shadow Grey 947-134



Black 947-103



Crystal Granite\* 947-116



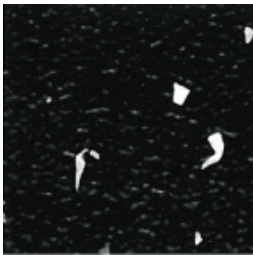
Sable\* 947-133



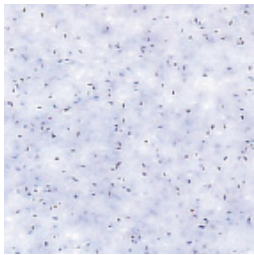
Charcoal\* 947-115



Grey Granite\* 947-118



Black Confetti\* 947-106



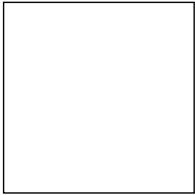
Indigo 947-121

\*

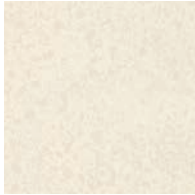


# COLOR SELECTOR

## HIGH PRESSURE LAMINATE AND PHENOLIC CORE



White 949-58



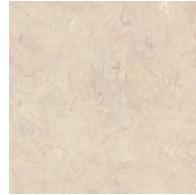
Antique White Oxide 303-58



Beige 958-58



Beige Grafix 506-58



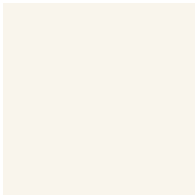
Natural Canvas 7022-58 WE



Jute Gauze 7709-58



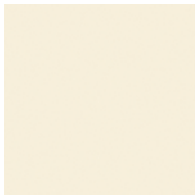
Cotta Stone 7266-58



Antique White 932-58



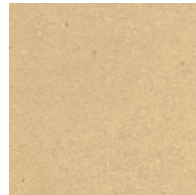
GeoWhite 5270-58



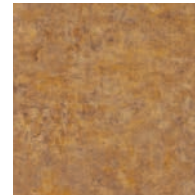
Almond 920-58



Mineral Spa 6920-58



Cardboard Solidz 7813-58



Metal Sun 6922-58



Sienna Terra 7216-58



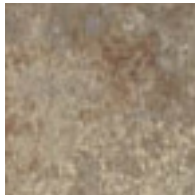
Birch 921-58



Chalk Solidz 7814-58



Tuscan Marble 7736-58



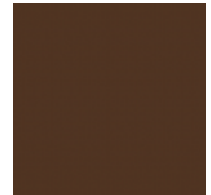
Autumn Indian Slate 3687-58 E



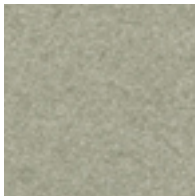
Stop Red 839-58



New Burgundy- 7966-58



Dark Chocolate 2200-58



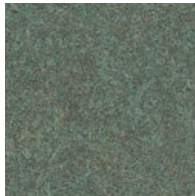
Nature Solidz 7815-58



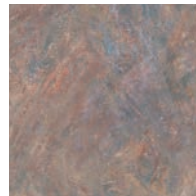
Possum 5343-58



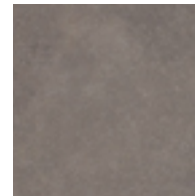
Metal Earth 3512-58



Forest Terra 7219-58



Crayon 7226-58



Earth Wash 7213-58



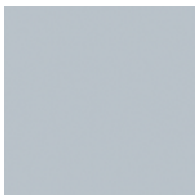
Graphite 837-58



Sky Terra 7694-58



Buffed Aluminum 7740-58



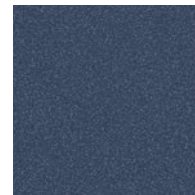
Steel 1484-58



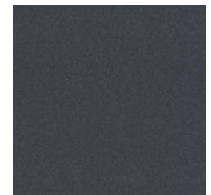
Breeze Solidz 3502-58



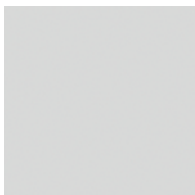
Marine Blue 914-58



Navy Grafix 7018-58



Graphite Grafix 515-58



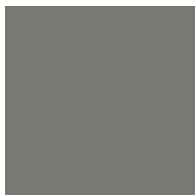
Folkstone 927-58



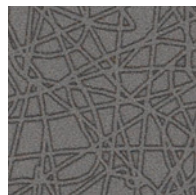
Folkstone Grafix 507-58



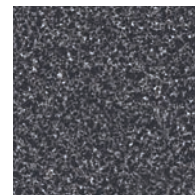
Fogdust 1816-58



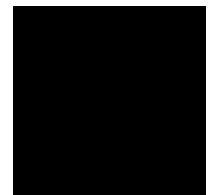
Citadel 1097-58



Geo Citadel 5273-58



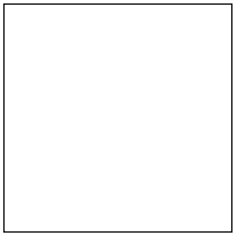
Stellar 689-58



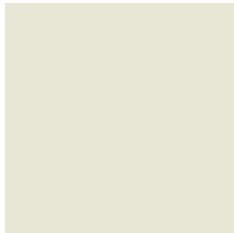
Black 909-58

# Powder-Coated Baked Enamel Color Selector

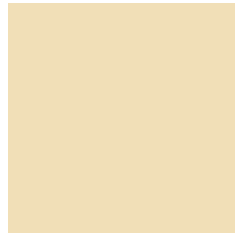
---



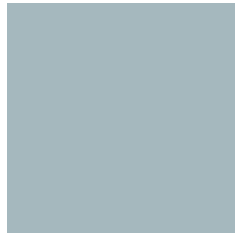
White



Folkstone



Almond



Cinder Gray



Concrete



Black



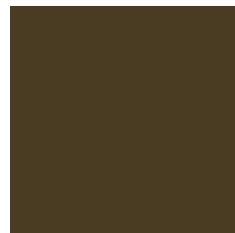
Yoke White



Organic Green



Beige



Dark Chocolate



Graphite



Porcelain



Tan



Burgundy



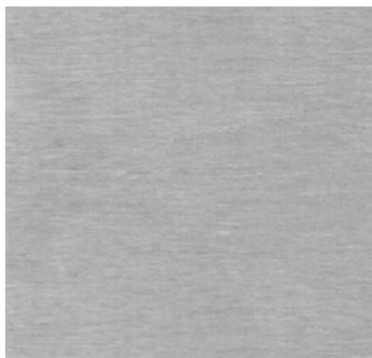
Hunter Green



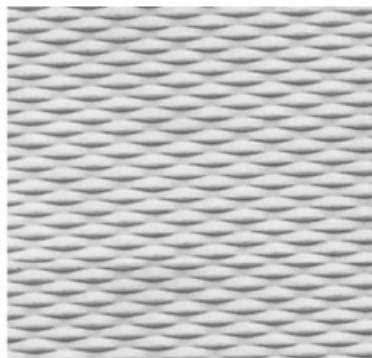
Marine Blue

**NOTE: PLEASE BE ADVISED THAT COLOR SELECTOR CONTAINS A DIGITAL REPRESENTATIONS OF THE COLOR. ACTUAL COLOR MAY VARY. REFER TO ACTUAL PRODUCT SAMPLES FOR FINAL SELECTION.**

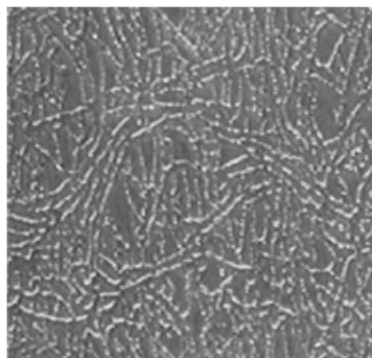
---



Brushed Stainless Steel



5WL



Leathergrain



Swirl





- Six laminate colors, textured, graffiti-resistant finishes
- Quick 6 Phenolic colors available in phenolic core, graffiti-resistant finishes
- High pressure laminate, overhead braced toilet partitions
- Phenolic Core, overhead braced toilet partitions (other construction types available)
- Ready to go out the door when you call

All standard sizes in stock at Ampco Florida, Ampco Tennessee, Ampco Texas, and Ampco Washington.

### Colors available in High Pressure Laminate



White

Almond

Gray

Natural Sand

Gray Sand

Black Sand

### Colors available in Solid Phenolic



Almond

Natural Sand

Gray Sand

Black Sand



### EVERGREEN

Evergreen solid color core phenolic features earthtone colors, and textured, graffiti resistant finish. Overhead braced, floor mounted, ceiling hung or floor-to-ceiling construction all with stainless steel hardware.

Available in Euroline  
Available in Class A Fire Rating

#### CONSTRUCTION FEATURES:

- 3/4" (19mm) thick stiles and doors
- 1/2" (12mm) thick panels and screens.
- Impact resistant, scratch resistant.
- Structural screw holding power.
- Water Resistant
- Textured graffiti resistant finish.
- Cast stainless steel door hardware.



### EUROLINE

Euroline restroom compartments offer unsurpassed security and privacy achieved with a 6 inch (150 mm) floor clearance and door mounting system that eliminates see-thru gaps.

Available in high-pressure laminate, phenolic, evergreen and solid surface partitions. Powder-coated stainless steel finished aluminum hardware. Tamper resistant fittings and nylon bearings provide corrosion resistance.

#### Ease of Installation

Design for simple installation, on-site work is kept to a minimum, speeding up the process and saving considerable time and money.

Available in two construction styles: Metro and Classic



### Q6 LAMINATE/PHENOLIC

Quick 6 are compartments in high pressure laminate and phenolic core, that are ready to go out the door when you call. They have a graffiti-resistant finish and are available in overhead braced construction style.

Laminates are NEMA GP-50 (.050") (1.2mm) thick and meet all current laminate specifications.

Cost Index: 105 (HPL), 230 (Phenolic)



Architectural Flush Wood Doors

### STAINLESS STEEL

Unmatched by any other system in beauty and strength. Stainless Steel material has a soft, rounded door and stile edge. Recommended for high humidity applications. Shipped with protective PVC film that is easily removed after installation.

COST INDEX:  
245/100

#### CONSTRUCTION FEATURES

- Heavy duty cast chrome plated non-ferrous Zamac hardware.
- All corners welded for strength, rigidity and longevity.

#### OPTIONAL FEATURES

- Cast Stainless Steel hardware.
- Heavy duty cast chrome plated Zamac hardware.
- Continuous aluminum or stainless steel wall brackets.
- Continuous stainless steel hinges.
- No sight line feature.



### SOLID PLASTIC POLYETHYLENE (HDPE)

Utilizes the latest technological polymer resin composition. Recommended for parks, schools, recreational facilities and high traffic locations. Water and graffiti resistant, virtually maintenance free and will not delaminate or oxidize.

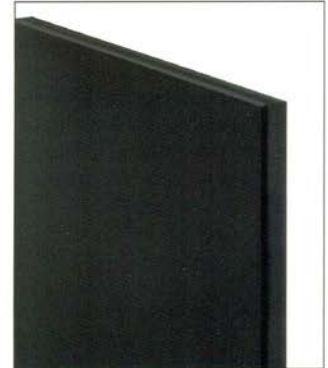
COST INDEX:  
240/100

#### CONSTRUCTION FEATURES

- Clear satin anodized aluminum hardware.
- Graffiti resistant textured surface.
- Water resistant.
- Solid color throughout.

#### OPTIONAL FEATURES

- Continuous stainless steel brackets and hinges.
- Vinyl plastic continuous brackets and/or shoes
- Satin anodized aluminum hardware.
- Continuous aluminum wall brackets.
- Double height aluminum wall bracket.
- Stainless steel hardware.
- Aluminum heat sink mounted on bottom of doors and panels.



### SOLID SURFACE VENEER

Carry all the same advantages as solid surface compartments such as aesthetic elegance, ease of maintenance, and durability, at a more economical price. The material thickness is 1/8" (3mm), bonded to a core. A variety of luxurious colors and patterns are available.

COST INDEX  
700/100

#### CONSTRUCTION FEATURES

- All construction styles.
- Heavy Duty cast stainless steel door hardware and stamped stainless steel brackets.
- 1-1/4" stiles (31 mm)
- 1" (25mm) Doors, panel and screen thickness.

#### OPTIONAL FEATURES

- Heavy duty cast chrome non-ferrous Zamac hardware.
- Continuous aluminum adjustable hinge.
- Continuous aluminum or stainless steel brackets.
- Continuous stainless steel hinge.
- No sight line feature.
- 1" minimum (25mm) finished doors, panels and screens.
- Plywood core, AB exterior grade.
- Stainless Steel Hardware.
- No added urea formaldehyde particleboard.



### SOLID SURFACE

Elegant and durable. Constructed of truly renewable materials allowing easy on-site repair. Impervious to water, moisture and heat. Class A fire rating. Anti-microbial features.

COST INDEX  
950/100

#### CONSTRUCTION FEATURES

- Overhead braced or floor to ceiling construction.
- Heavy duty three or four surface mounted cast stainless steel hinges.
- 3/4" (19mm) door and stile thickness.
- 3/4" (19mm) panel thickness.

#### OPTIONAL FEATURES

- Heavy duty cast chrome plated non-ferrous Zamac hardware.
- 1/2" (12mm) panel thickness.
- Continuous stainless steel wall brackets and hinges.
- 1/8" (3.0 mm) solid surface veneer available.
- Concealed hardware system for enhanced beauty.
- No sight line feature.





#### HIGH PRESSURE DECORATIVE LAMINATE

The most popular specification when design requires flexibility, aesthetics and economy. Available in a full range of solid colors, patterns and finishes. Heavy duty cast chrome plated non-ferrous hinges and bracket hardware are standard.

COST INDEX:  
100/100

#### CONSTRUCTION FEATURES

- 1" (7/8"- 22mm) nominal doors, panels and screens.
- Cast Chrome plated non-ferrous Zamac hardware.

#### OPTIONAL FEATURES

- 1" minimum (25mm) finished doors, panels and screens.
- Plywood core, AB exterior grade.
- Stainless steel edges on doors, panels, stiles and screens.
- Stainless Steel Hardware.
- No added urea formaldehyde particleboard.
- Continuous aluminum or stainless steel wall brackets.
- Continuous stainless hinges or three hinges per door.



#### SOLID PHENOLIC CORE

Provide strength, durability, color selection and design flexibility. Clearly the best value in the industry. For high traffic public buildings, schools and institutional facilities. A virtually indestructible core makes it suitable for wet areas.

COST INDEX:  
230/100

#### CONSTRUCTION FEATURES

- 3/4" (19mm) thick stiles and doors.
- 1/2" (12mm) thick panels and screens.
- Heavy duty cast stainless steel door hardware and stamped stainless steel bracket hardware.
- Polished black edges.
- Class B fire rating.

#### OPTIONAL FEATURES

- 1" (25mm) thick stiles.
- Class A fire rating.
- Continuous stainless steel hinge or three hinges per door.
- Continuous stainless steel or aluminum wall brackets.
- Cast chrome plated non-ferrous Zamac hardware.
- Continuous aluminum adjustable hinge.
- No sight line feature.



#### SOLID PHENOLIC CORE WITH PVC EDGING

Ampco's 3 mm PVC/ABS edge tape, you can color-match your component edging with the corresponding surface. Choose from an array of colors and patterns to enhance your overall design aesthetic. Provides superior edge protection.

COST INDEX  
260/100

#### CONSTRUCTION FEATURES

- 3/4" (19mm) thick stiles and doors.
- 1/2" (12mm) thick panels and screens.
- Heavy duty cast door hardware and stamped stainless steel bracket hardware.
- Class B fire rating.
- Decorative edge profile.

#### OPTIONAL FEATURES

- 1" (25mm) thick stiles.
- Continuous stainless steel hinge or three hinges per door.
- Continuous stainless steel or aluminum wall brackets.
- Cast chrome plated non-ferrous Zamac hardware.
- No sight line feature.



#### METAL, POWDER COATED BAKED ENAMEL

Economical and long-lasting. Rounded stile and door edges provide soft relief and prevent edge chipping. Powder coated baked enamel paint finish provides excellent results from ASTM standards for salt spray, humidity and impact.

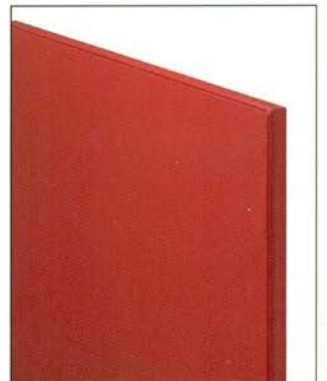
COST INDEX  
105/100

#### CONSTRUCTION FEATURES

- All corners welded for strength, rigidity and longevity.
- Cast chrome plated non-ferrous Zamac hardware.

#### OPTIONAL FEATURES

- Cast stainless steel hardware.
- Continuous stainless steel or aluminum wall brackets.
- Continuous stainless steel hinge.
- Continuous aluminum hinge.
- No sight line feature.





# HARDWARE

## Fasteners

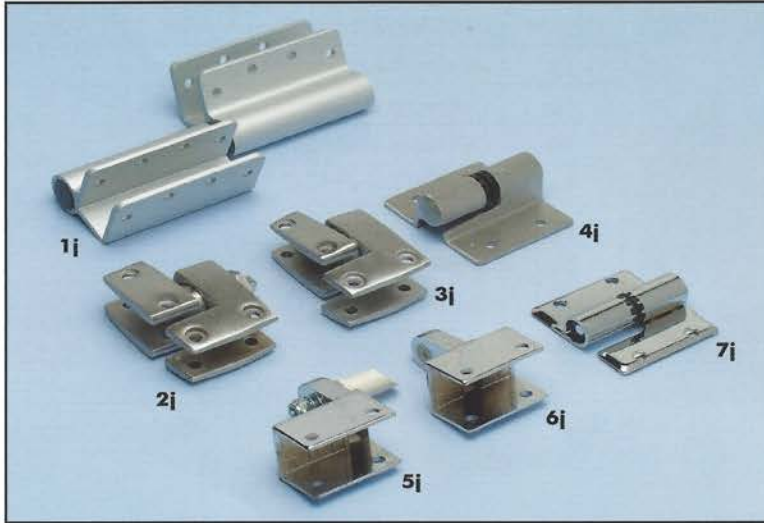


Item #	Description	Item Code
<b>Ceiling Hung</b>		
1m	Threaded Rod	439-87405
2m	Washer	439-CH WASHER
5m	Nut	439-TR NUT
<b>Floor Mounted</b>		
3m	Threaded Rod	439-87435
4m	Washer	439-WASHER 5/16
5m	Nut	439-TR NUT
6m	Rawl	439-RAWL
7m	Nut Pro	439-T NUT PRO
8m	Tap	439-TAP 1-4

Item	Description	Phenolic Core		Aluminum	High Pressure Laminate			Chrome Plated Zamac		
		1/2"	3/4"	1"	7/8"	1"	1-1/4"	1"	7/8"	1-1/4"
9m	#12 x2" Anchor Screw			439-92020						439-91913
10m	Lead Anchors			439-9117						439-9117
11m	Plastic Anchors			439-9106						439-9106
12m	#12 x7/16" SS Blunt Pt. Screw	439-91530								
13m	#10 x1" SS Tap Screw	N/A	N/A		439-90969					439-91064
14m	#10 x1" SS Tap/Phillip Screw	N/A	N/A		439-91154 (ss six lobe)					439-91114 (Phillips)
15m	Security Six Lobe Drive Bit			439- T20 / 439-T27						
16m	#8-32 Unslotted Barrel Nut			439-9870						439-9864
17m	#8-32 Six Lobe Oval head	N/A	439-88430	439-88289	N/A	439-88440	439-88464	439-88440		439-88464
18m	#10-24 Barrel Nut	439-88310	439-88310	439-88320		439-88320				439-88314
19m	#10-24 Shoulder Screw	439-88330	439-88350	439-88360	439-88350	439-88360		439-88364	439-88344	439-88364
			439-88340			439-88390				

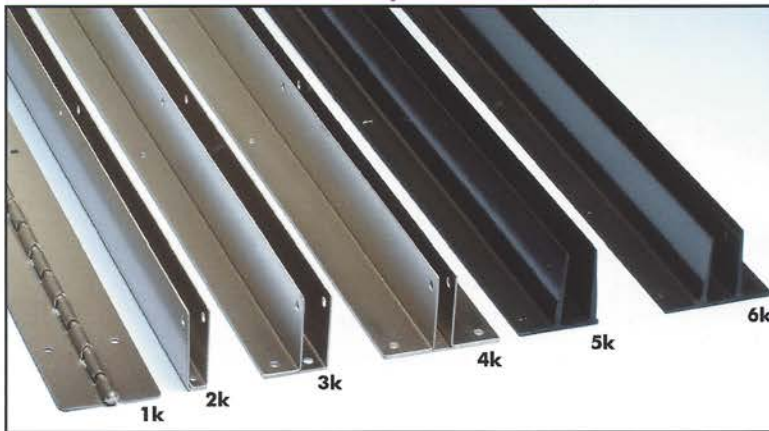
# HARDWARE

## Hinges



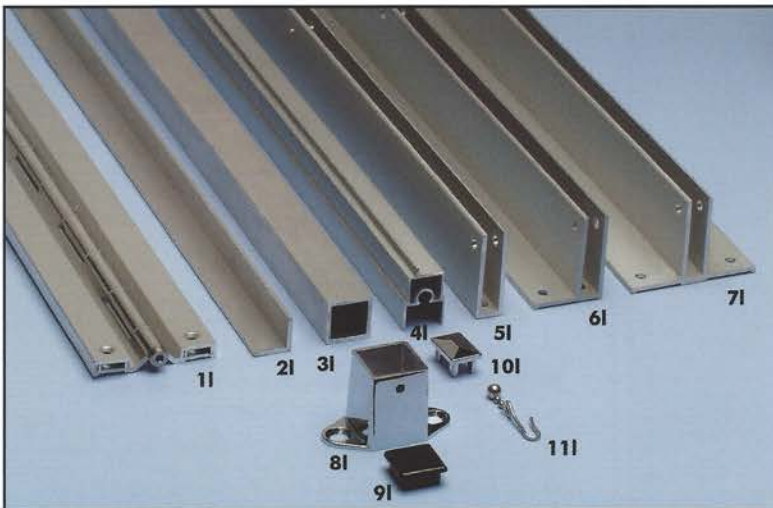
ITEM #	DESCRIPTION
1j	Satin Anodized Aluminum Hinge for Solid Plastic 8" RH or LH
2j	Bottom Bracket Hinge Stainless Steel for Phenolic
3j	Top Hinge Stainless Steel for Phenolic
4j	Surface Mounted Hinge set, cast stainless steel
5j	Zamac Bottom Door Hinge for HPL
6j	Zamac Top Door Hinge for HPL
7j	Brass Surface Mounted Hinge set

## Stainless Steel and Vinyl Hardware



ITEM #	DESCRIPTION
1k	Inswing and Outswing Stainless Steel Continuous Camed Hinge 54", with 0° or 20° cam hinge
2k	U Bracket available in 1/2", 3/4" and 1" by 54 1/2"
3k	F Bracket available in 1/2", 3/4", 1" and 1 1/4" by 54 1/2"
4k	T Bracket available in 1/2", 3/4" and 1" by 54 1/2"
5k	F Bracket Vinyl Plastic 1" x 54"
6k	T Bracket Vinyl Plastic 1" x 54"

## Aluminum Miscellaneous Hardware



ITEM #	DESCRIPTION
1l	Aluminum Continuous Adjustable Spring Tension Hinge 54" with cover plates
2l	Angles available in 1/2", 1" and 1 1/2"
3l	Square Tube 1 1/4"
4l	Length Headrail available in 3/4", 1" and 1 1/4"
5l	U Bracket available in 1/2", 3/4" and 1" by 54 1/2"
6l	F Bracket available in 1/2", 3/4", 1" and 1 1/4" by 54 1/2"
7l	T Bracket available in 1/2", 3/4" and 1" by 54 1/2"
8l	Post Shoe 1 1/4" Chrome
9l	1 1/4" Post End Cap
10l	End plug for HeadRail available in 3/4", 1" and 1 1/4"
11l	Chrome Bead Hook (for showers)



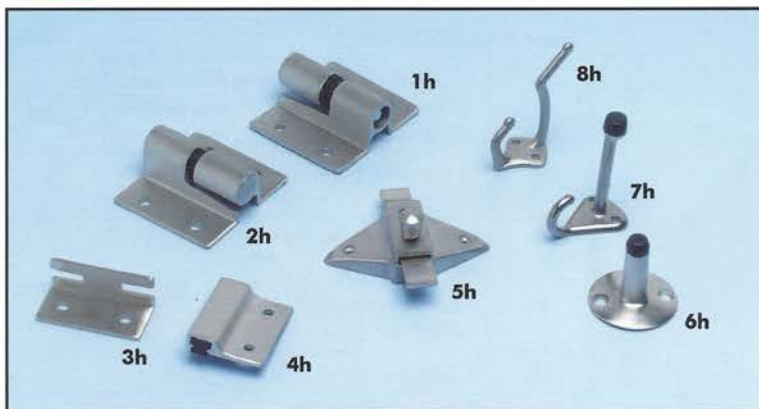
# HARDWARE

## Stainless Steel Door Pack for Stainless Steel and Baked Enamel Compartments



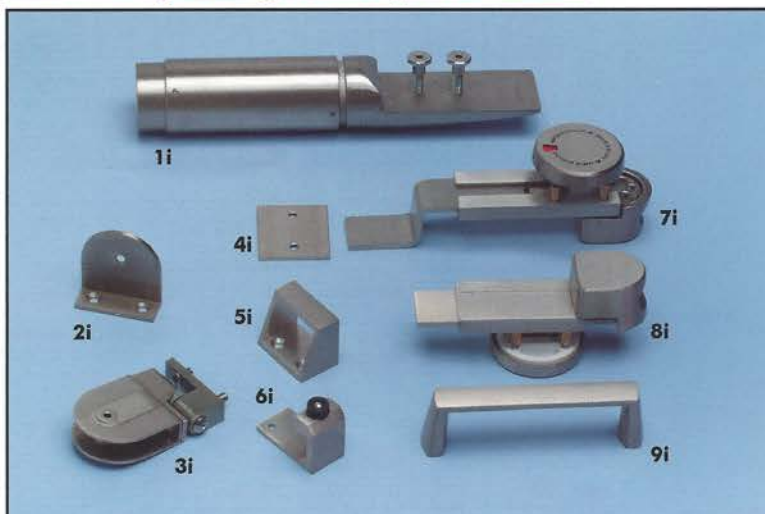
ITEM #	DESCRIPTION
1g	Inswing Keeper
2g	Outswing Keeper
3g	Outswing Door Stop
4g	Inswing Door Hook
5g	Outswing Door Hook
6g	Inswing and Outswing Slide Latch
7g	Outswing Door Pull
8g	Bottom Adjustable Hinge Set
9g	Top Adjustable Hinge Set

## Stainless Steel Door Pack for Solid Surface Compartments



ITEM #	DESCRIPTION
1h	Surface Mounted Adjustable Hinge Top
2h	Surface Mounted Adjustable Hinge Bottom
3h	Inswing Keeper Split Emergency
4h	Outswing/Inswing Keeper Split Bumper
5h	Inswing and Outswing Slide Latch
6h	Outswing Door Stop
7h	Inswing Door Hook
8h	Outswing Door Hook

## Euroline (No Sight Line) Hardware



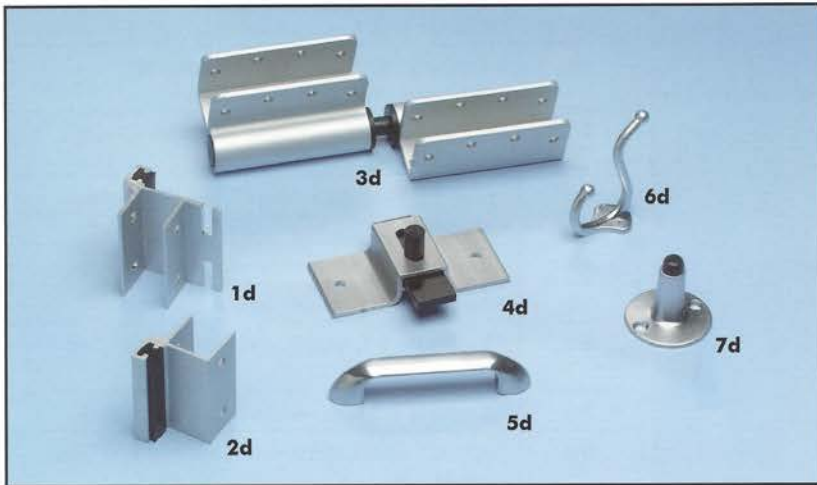
ITEM #	DESCRIPTION
1i	Pedestal Stainless Steel Finished Aluminum available in 1/2" and 3/4"
2i	Stainless Steel Finished Aluminum L Bracket available in 1/2" and 3/4"
3i	Stainless Steel Finished Aluminum Hinge available in 1/2" and 3/4" Three (3) per door
4i	Outswing Keeper Finished Aluminum
5i	Inswing Keeper Finished Aluminum
6i	Inswing Door Hook Finished Aluminum
7i	Outswing Slide Latch with occupancy indicator Finished Aluminum
8i	Inswing Slide Latch Finished Aluminum
9i	Outswing Door Pull Finished aluminum

\*Optional on High Pressure Laminate, Phenolic Core, Solid Surface, and Solid Surface Veneer



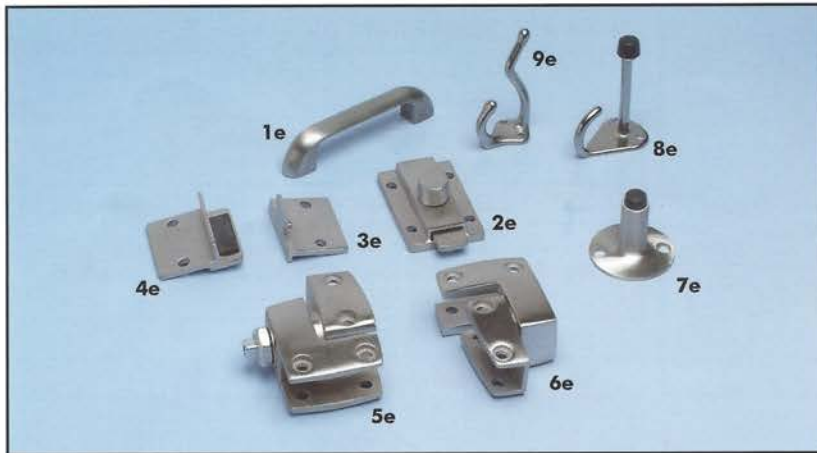
# HARDWARE

## Clear Satin Anodized Aluminum Door Pack for Solid Plastic (HDPE) Compartments



ITEM #	DESCRIPTION
1d	Inswing Keeper
2d	Outswing Keeper
3d	8" RH or LH adjustable hinge set
4d	Inswing Outswing Slide Latch
5d	Outswing Door Pull
6d	Outswing Door Hook
7d	Outswing Door Stop

## Stainless Steel Door Pack for Phenolic Core Compartments



ITEM #	DESCRIPTION
1e	Outswing Door Pull
2e	Inswing and Outswing Slide Latch
3e	Inswing Keeper
4e	Outswing Keeper
5e	Bottom Adjustable Hinge
6e	Top Adjustable Hinge
7e	Outswing Door Stop
8e	Inswing Door Hook
9e	Outswing Door Hook

\*Optional on High Pressure Laminate

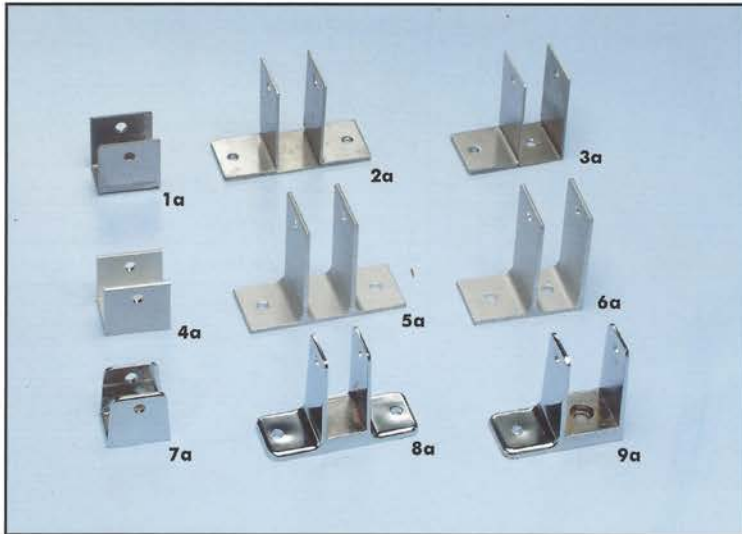
## Cast Chrome Plated Zamac Door Pack for Stainless Steel and Baked Enamel Compartments



ITEM #	DESCRIPTION
1f	Inswing Keeper
2f	Outswing Keeper
3f	Outswing Door Stop
4f	Outswing Door Hook
5f	Outswing Door Pull
6f	Inswing and Outswing Slide Latch
7f	Inswing Door Hook
8f	Bottom Adjustable Hinge Set
9f	Top Adjustable Hinge Set

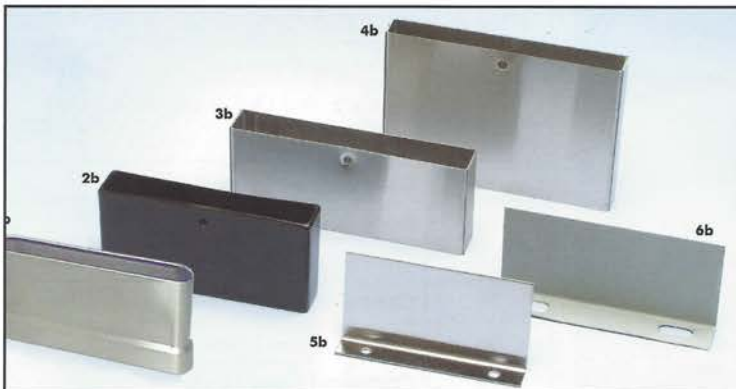
# HARDWARE

## Brackets



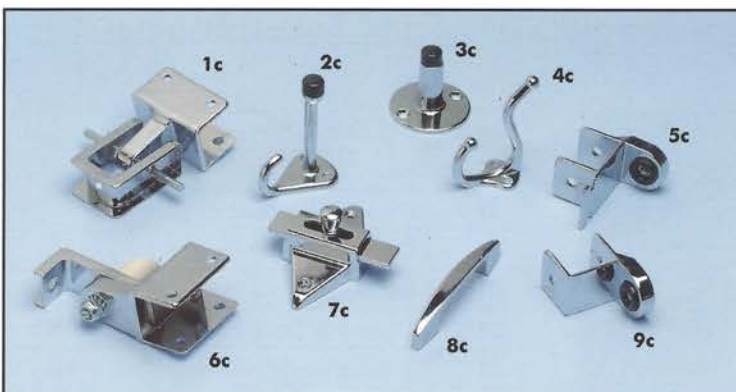
ITEM #	DESCRIPTION
1a	Stamped Stainless Steel U Bracket available in 1/2", 3/4", 7/8" and 1"
2a	Stamped Stainless Steel T Bracket available 1/2", 3/4", 7/8" and 1"
3a	Stamped Stainless Steel F Bracket available in 1/2", 3/4", 7/8", 1" and 1 1/4"
4a	Aluminum U Bracket, available in 1"
5a	Aluminum T Bracket, available in 1"
6a	Aluminum F Bracket, available in 1" and 1 1/4"
7a	Zamac U Bracket available in 7/8" and 1"
8a	Zamac T Bracket available in 3/4", 7/8" and 1" and 1 1/4"
9a	Zamac F Bracket 3/4", 7/8", 1" and 1 1/4"

## Shoes



ITEM #	DESCRIPTION
1b	Stainless Steel shoe for Baked Enamel and Stainless Steel
2b	Plastic vinyl shoe for Plastic available in 1" X 3"H
3b	Stainless Steel shoe for HPL 3"H available in 3/4", 1" and 1 1/4"
4b	Stainless Steel shoe for Phenolic core 5"H available in 3/4" and 1"
5b	L Plate available in 3/4"
6b	L Plate available in 1 1/4"

## Cast Chrome Plated Zamac Door Pack for High Pressure Laminate Compartments



ITEM #	DESCRIPTION
1c	Top Adjustable Hinge Set
2c	Inswing Door Hook
3c	Outswing Door Stop
4c	Outswing Door Hook
5c	Inswing Keeper
6c	Bottom Adjustable Hinge Set
7c	Outswing and Inswing Slide Latch
8c	Outswing Door Pull
9c	Outswing Keeper

\*Optional on Phenolic Core